

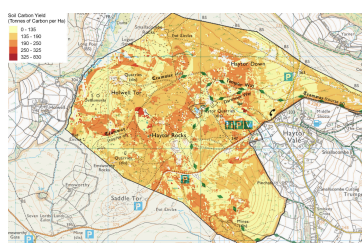
Services for Estates and Landscape Scale Projects

Since 2020, Farm Carbon Toolkit (FCT) has worked with estates and landscape-scale projects, supporting action to measure, understand and act on GHG emissions. As one of the first organisations to combine business carbon assessment and technical advice on farm practice change, we help estates reduce emissions and increase carbon sequestration, within nature-friendly and resilient farming systems.

Tailored Services

Our specialist advisory team and market-leading Farm Carbon Calculator software services provide a powerful combination of practical advice and data-driven insights. Our services can be tailored to the specific needs of estates and landscape-scale projects, whether for carbon footprinting, soil health assessments, agricultural advice or long-term transition planning.

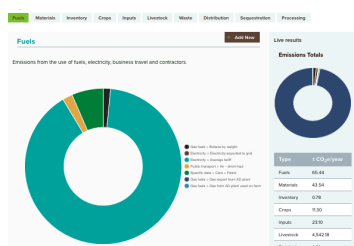
1. Estimating Farm Carbon Stocks and Soil Health



Soil underpins the entire farm system. Our soil sampling and analysis services establish baseline carbon stocks and soil health assessments. Using a soil sampling protocol that aligns with your goals, we can build an accurate representation of an estate.

Using our in-house soil sampling app and optional Land App integration, we can provide heat maps across the project area which can be used to represent soil carbon stock, nutrient levels and soil health indicators. From this, our advisors can identify areas that require action and support recommendations.

2. Farm Carbon Assessments



Our [Farm Carbon Calculator](#) offers carbon footprinting at multiple levels: by product, enterprise, farm, or landscape — covering emissions across Scopes 1, 2, and 3. The Calculator is aligned with the FLAG Guidance, GHG Protocol and Land Sector and Removals Guidance, with annual independent reviews of our methodology carried out by the Carbon Trust.

Using the Calculator, you will have access to benchmarking tools, enabling you to compare performance against similar business types, by region – drawing on 8,000+ sets of data. The Calculator also has scenario planning features, enabling users to model the impact of different land management strategies.

3. Carbon Reporting



Our comprehensive carbon assessments provide a clear understanding of carbon sources and sinks. These reports include actionable recommendations, driven by our deep understanding of agriculture and farm carbon management. Drawing on your business goals, we will provide recommendations to support emissions reduction and sequestration potential.

4. Transition Roadmap Preparation



We develop tailored roadmaps to help farms, estates, and landscape-scale projects reduce emissions and increase carbon removals. These roadmaps will align with your goals – whether that is transitioning towards more regenerative farming practices, net zero or carbon positive, or biodiversity enhancements.

With our highly experienced farm carbon and soil advisors, one of our core strengths at FCT is in supporting and empowering farmers and land managers to understand practically what is involved. Whether that's reducing fertiliser usage, manure management, rotational grazing or optimising cultivations to improve soil health.

5. Ongoing Advice and Support



Long-term success requires continuous improvement. Our advisory team can provide ongoing support including regular farm visits to support the implementation of transition roadmaps, as well as follow-up footprinting to track progress. Drawing on our range of projects across the UK, you will also be invited to workshops, farm walks with the winners of our [Soil Farmer of the Year](#) competition, and events such as our Annual Field Day.

Key Staff Working with Estates and Landscape Scale Projects

The majority of FCT's Advisory team are FACTS and BASIS-qualified.



Becky Willson: Technical and Business Development Director

With over a decade of experience in low-carbon agriculture, Becky has worked extensively with estates and landscape-scale projects. A Nuffield Scholar, Becky focused on communicating carbon reduction schemes to farmers. Becky is a regular speaker at national events, a professional trainer and developed the BASIS course on GHG accounting in agriculture.



Tim Dart: Project Manager

Tim has an international farm management, farm advisory and policy background. Tim has led the regional agricultural policy work, managed a protected landscape, led environmental partnership delivery for a local authority, as well as farm advisory work and large-scale habitat creation for a wildlife trust. Tim has also established renewable energy businesses and owns and runs his own farm, implementing regenerative techniques.



Rob Purdew: Senior Soil and Carbon Advisor

Rob has deep expertise in livestock farming and previously worked with Devon Wildlife Trust and the Pasture-Fed Livestock Association. He has worked with several large estates supporting tenants with footprinting and supporting practice change.



Anthony Ellis: Senior Soil and Carbon Advisor

An agronomist and arable farmer in Cornwall, Anthony brings extensive practical knowledge to FCT's work with estates and landscape projects. He specialises in supporting arable systems to transition to lower-emission practices.

A Selection of Clients



" Farmers and growers increasingly look to us for information and solutions regarding their carbon footprint, so our partnership with FCT, where we're certain of the integrity of the information, is crucial. FCT's independence, support and training aligns very much with our own principles.

Nick Shorter, Managing Director, Velcourt

FCT are truly unique. Their vision to explore farm GHG emissions at the time they did demonstrated amazing perception of the spotlight that food and farming would come under. Their team truly understand the link between farm emissions and the opportunities to abate these emissions at farm-level."

Gerard Hayes, Technical Director, Yeo Valley

About Farm Carbon Toolkit

Farm Carbon Toolkit was set up by farmers for farmers in 2010 as a Community Interest Company. Our mission is to provide world-leading practical and impact-led solutions to farmers, growers, land managers and their customers, to support the transition to climate-positive and resilient food production systems.



Getting in touch

To learn more about how we can support your estate's carbon journey, phone or email:

info@farmcarbontoolkit.org.uk / 07541 453413.